



**MODEL AND SMART CORPORATION SCHOOLS IN CHENNAI
UNDER CITIIS CHALLENGE INITIATIVE**

FINAL ARCHITECTURAL PROPOSAL





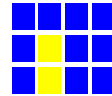
CONCEPT STATEMENT

The Key Principles of the newly Proposed
NEP 2020



1. **Respect for Diversity & Local Context**
2. **Equity & Inclusion**
3. **Community Participation**
4. Use of Technology
5. Emphasize Conceptual Understanding
6. Unique Capabilities
7. **Critical thinking and Creativity**
8. Continuous Review

experience



Classrooms & circulation between them.

Grouping of spaces is important for seamless learning, as it provides vistas for offline interactions and play.



Practical Training

Emphasising on hands on training, the aim here is to effectively use the resources provided in the labs



Access to Teachers

Providing vestibules and vistas to interact and increase familiarity between teachers and pupils.



Integration of BaLa concepts

Keeping in mind that children are in a constant state of learning from everything around them

The Campus is divided into two parts with a two lane main road running in between. The Erikarai Road is 33' feet and separated the campus into a main block and Annexe block.

The Overall campus area is 36,280 SQF (main building) + 24000 SQF (annexe building) which makes a total of 60,280 SQF. approximately.

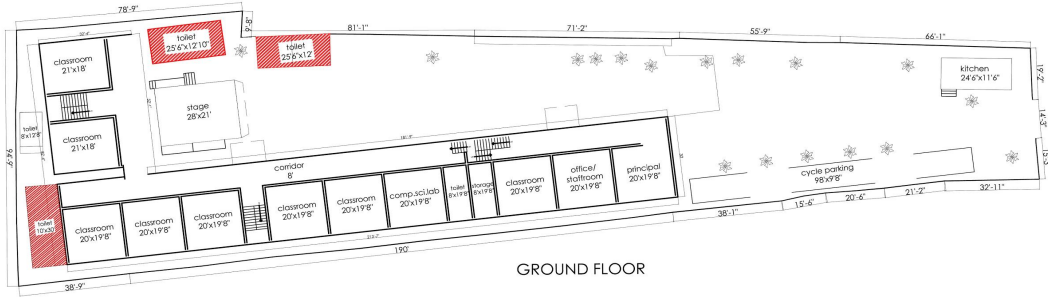


Currently the Main building hosts classrooms, labs, play zones, and the school kitchen. Consequently, the Annexe also hosts a mix of classrooms, labs, library and the smart classroom. This zoning brings along the hassle of teachers rushing across campuses within a small window of time between classes and also poses the hazard of children crossing a busy road.

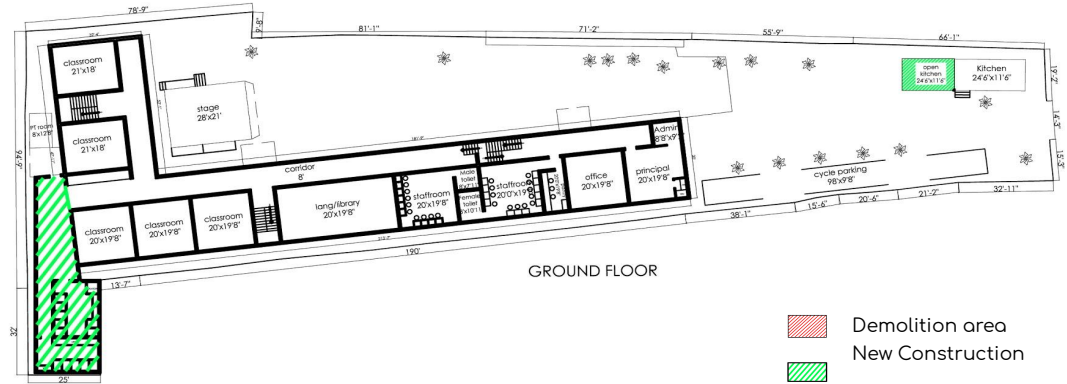
In an attempt to avoid this compromise, we propose to **make clusters** of learning, hands-on and play spaces.



The Main campus has multiple blocks of toilets built across different timelines, and of varying maintenance conditions. This is being demolished and accommodated in the newly bought plot for 3 floors.

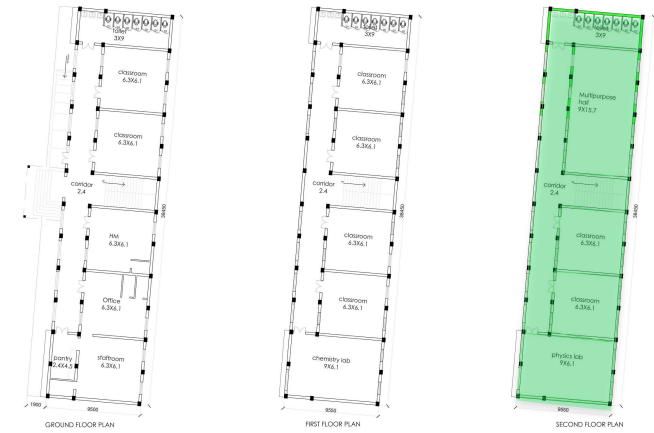


GROUND FLOOR



GROUND FLOOR

- Demolition area
- New Construction



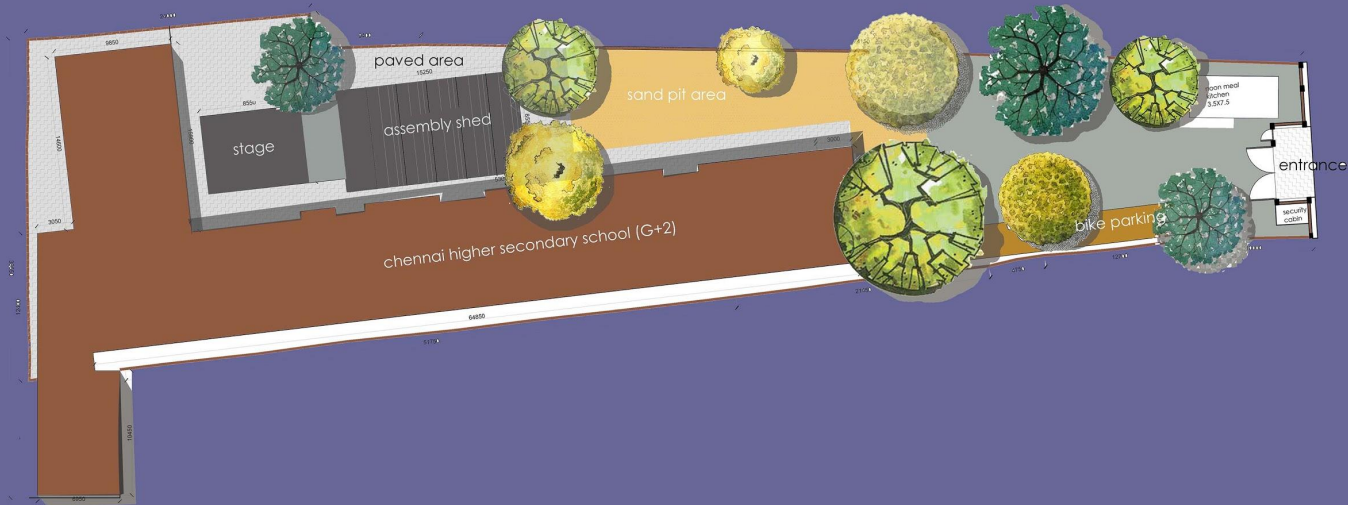
GROUND FLOOR PLAN

FIRST FLOOR PLAN

SECOND FLOOR PLAN

The Main building is proposed to host 6-10th standards for easy use of the noon meal kitchen and also alignment of teachers to one campus without having to cross the road. The annexe subsequently will host 11 and 12th classes only. The HM and the admin office is also going to be shifted there consequently.

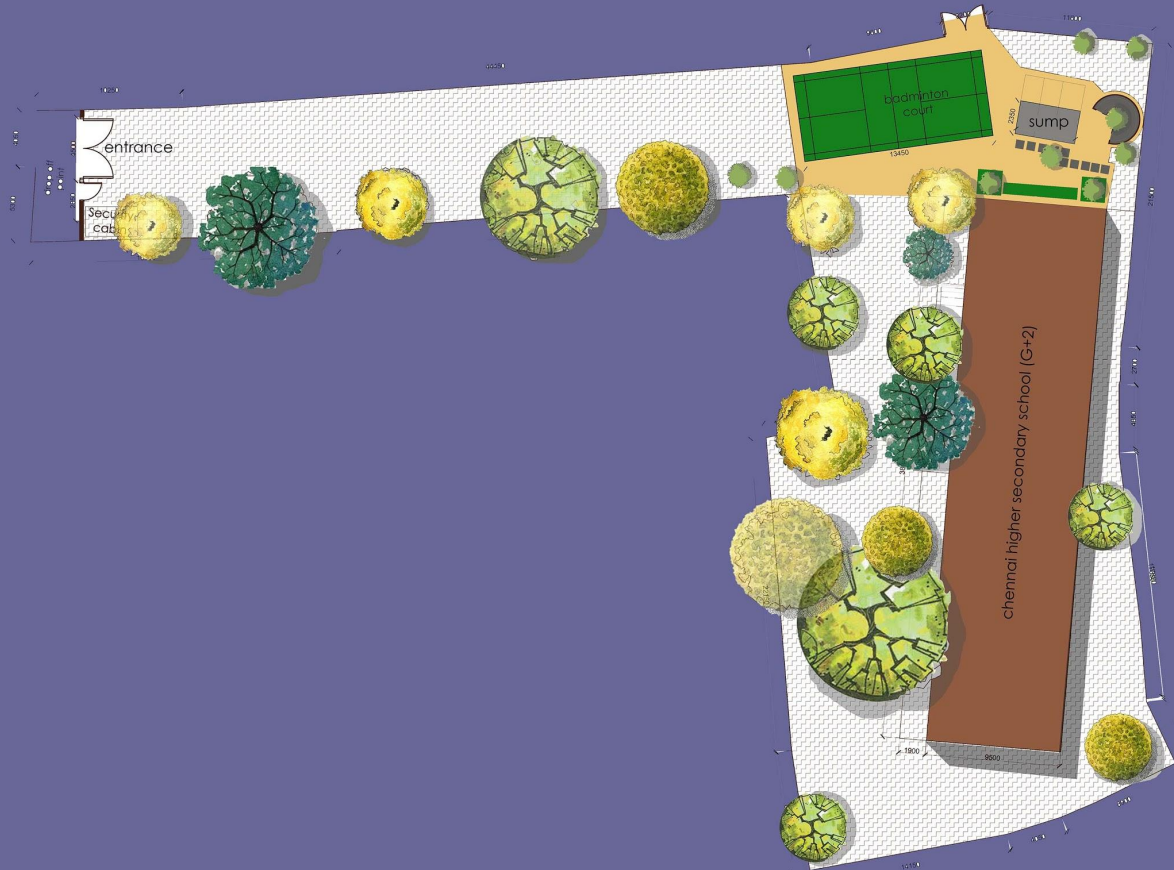




The Design brief in the Mainblock is:

1. New toilet block
2. Assembly area Shed
3. Staffroom reconfigured with toilets.
4. Demolition of existing toilets in the playground and setbacks.

Pic : Site Plan - Main Block



The Design brief in the Annexe block is:

1. Addition of Second floor (includes Headroom, Terrace)
2. Badminton court

Pic : Site Plan - Annexe Block



Parts of corridors are fully exposed to the vagaries of weather and turning the corridors long and mundane. This has been encountered by bringing screen walls and jaalis in the elevation.

The entrance porch is also a new addition which extends a warmer welcome into the school with a ramp and fully open steps.

Pic : Isometric aerial view of Annexe Block



The Architectural makeover for the annexe block are:

1. Screenwall
2. Entrance porch

Pic : Front Elevation of Annexe Block



In an attempt to make the campus greener, jali walls and planter-boxes are included at different levels in the elevation.

Of the 3 staircases, one runs close to the main entrance runs along the wall and remains dark for most part of the day. This has been revamped into a more volatile and cheerful space by introducing a screen wall. The day light filtered through this space makes it ideal for cross-level interactions and points of view to the exterior at different mid levels that exist.

Pic : Isometric aerial view of Main Block

The Architectural makeover for the annexe block are:

1. Staircase daylighting
2. Entrance porch
3. Corner Massing



Pic : Front Elevation of Main Block



Pic : A Perspective of Annexe Block



Pic : A Perspective of Main Block

